

Title: The Eifel volcanic field (Western Germany)**Leaders:** Nicole Richter, RWTH Aachen University, Germanyn.richter@nug.rwth-aachen.de

Ulrich Kueppers, Ludwig-Maximilians-Universität München, Germany

u.kueppers@lmu.de**Financially responsible person:** Nicole Richter

Summary: The Eifel is an intraplate volcanic field in Central Western Germany. Activity started approx. 300.000 - 400.000 years ago and showed intermittent behaviour with long hiatus periods. It is the type location for maar volcanoes resulting from monogenetic basanitic-tephritic eruptions and rarer yet very violent Plinian phonolitic eruptions. The last major event, the infamous Laacher See eruption took place approx. 11.000 years BCE and affected Central Europe severely. There are proven deposits all the way to Poland and South Denmark, Central France and Northern Italy. The last eruption in the Eifel took place approx. 9.000 years BCE ago at the Ulmener Maar. During this field trip, we will be appreciating the heterogeneous textures of the related deposits, as well as other geological highlights.

When: Pre-conference, 23-27 June 2025**Start and finish locality:** Frankfurt airport (FRA)**Program:**

Day 1 – Tuesday 24 June: Arrival to Frankfurt [FRA, individually organised], transfer to Mendig, get-together, introduction of participants.

Day 2 – Wednesday 25 June: East Eifel [planned: Laacher See (Mofetten, In den Dellen, Nickenich)]

Day 3 – Thursday 26 June: East Eifel [planned: Felsenkeller, Ettringer Lay, Dachsbuschgleitfalte]

Day 4 – Friday 27 June: Westeifel [planned: Rockeskyller Kopf, Ulmener Maar, Pulvermaar]

Day 5 – Saturday 28 June: Transfer to Frankfurt airport and flight to Geneva [GVA, individually organized]

Level of fitness: Light to medium, walking over uneven terrain will be required.**Required equipment:** Passport or ID-card valid for Germany, hiking boots, wind and waterproof jackets, sun protection, day pack.**Accommodation type:** [Laacher See Haus](#), modern youth hostel. Double rooms with private bathroom (single room at extra costs), breakfast included.**Number of participants:** approx. 20**Costs:** 400€ (for transport from/to FRA, accommodation with breakfast and entry fees. **lunch and dinner excluded**)

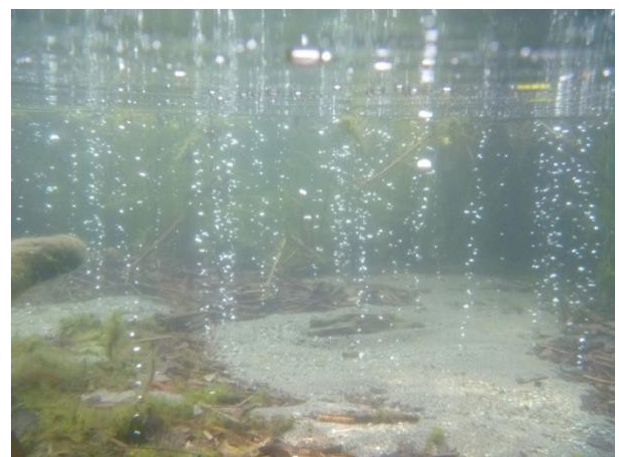
Web Cover picture: Deposits of the Laacher See eruption at the Wingertsbergwand, predominantly made up of PDC deposits. Picture credit: Ulrich Kueppers



Additional pictures:



Laacher See eruption, proximal-medial fall deposits, Picture credit: Ulrich Kueppers



CO₂ degassing at the shore of Laacher See. Picture credit: Ulrich Kueppers (left) and Regine Ettenhuber (right)



Cross section through the Eppelsberg, a monogenetic eruption center with a syneruptively grown dyke, Picture credit: Nicole Richter (left)

Dachsbusch Gleitfalte, the result of soft sediment deformation in a freezing and thawing soil. Picture credit: Ulrich Kueppers (Right)